



Education & Equity

By: Holly McCoy, Executive Director

LSW continues to think courageously about how we best meet our students where they are academically and physically. Over this past year, LSW focused on system-impacted students by expanding educational programming to those who are justice-involved. As part of this initiative, LSW opened a new learning center onsite at the Milwaukee County Jail. The jail had previously only offered educational programs for adults through age 21. Jail staff initially identified this gap and reached out to LSW based on growing requests they had received for GED/HSED services.

ProLiteracy states that **75% of those who are incarcerated do not have a high school diploma and struggle with low literacy.** From *Partnering with Jails to Improve Reentry*: "Community-based organizations are vital partners in jail reentry initiatives because they can provide services both inside the jail and in the community; they are the connection to community services for individuals in jail." LSW will continue to learn more about how we can support justice-involved students. In the upcoming year, we will share more about another project with the Department of Corrections. LSW has worked with system-impacted students for decades. We are now being more intentional and considering more ways that we can reduce recidivism. While education is only one barrier to reentry, we believe that

see **Equity** continued on page 2



Loyola University graduate student, Silvia (left), and her English language tutor, Chris (right).



The Faith of a Lifelong Learner

By: Patrice Vnuk, Manager of ELL Programs

What does it mean to be a lifelong learner? To answer this question, we can look to the students at Literacy Services of Wisconsin who demonstrate this practice in unique ways every day.

Silvia Jiménez, a learner in LSW's English Language Learning (ELL) program, is one of these students. Silvia is a mother of eight, a wife, a full-time employee, and now, a graduate student at Loyola University in the Pastoral Studies program. While her first semester as a graduate student began in early June, Silvia's educational

journey started long before this. She has worked at the parishes of Saint Patrick and Our Lady of Guadalupe, Catholic Jesuit churches on the south side of Milwaukee, for many years in the religious education programs. In 2018, she started working full-time as the Parish Life Coordinator, and is now the Parish Life Director for both churches. Throughout all of this, she also attended weekly English lessons at LSW, building the skills she needed to communicate with parishioners and staff who did not share her native language of Spanish.

see **Lifelong Learning** continued on page 10

The Syllabus

Literacy Services of Wisconsin Newsletter

The Syllabus is the quarterly newsletter of the 501(c)(3) nonprofit organization, Literacy Services of Wisconsin.

Board of Directors

Officers: Jenny Littmann, President;

Daniel M. LaFrenz, Treasurer; Kerry Leet, Secretary, Jim Paetsch, Past-president.

Board Members: Kimberly Chesir, Gil R. Cubia, Dr. Damira Grady, Tanya Holler Muench, Colin Hutt, Mike Knoeller, Katie Mertz, Joshua Palleon, David Pritchard, Gabriella R. Saenz, Mikal Wesley, Mike Wysong.

Staff

Program Management Team: Aaron Goyette, Associate Director; Steve Barron, Manager of Credentialing Programs & Chief Examiner; Charles Bradford, Manager of Community Corrections Programs; Bianca Johnson-Ortiz, Manager of Adult Education Programs; Patrice Vnuk, Manager of ELL Programs. **Program & Support Team:** Niamani Beckley, Office Support Specialist; Mikelle Bloechl, Silver Spring Neighborhood Center Site Coordinator; Collin Diemert, Program Support Specialist; Carol Josten, North Division High School Site Coordinator; Betsy Kerns, RISE MKE HSED Instructor; Ginger Kinyon, Racine HSED Instructor; Chad Kline, YouthBuild HSED Instructor; Hannah Lingenfelter, Waukesha Center Site Coordinator; Nicole Ludmer, ELL Instructor; Jessie Miller-Carpiaux, Program Support Specialist; Charlotte Newgord, WRTP/BIG STEP HSED Instructor; Madison Olig, Volunteer Engagement & Events Coordinator; David Peters, Milwaukee County Jail Program Coordinator; Caitlin Petersen, South Division Site Coordinator & Organizational Evaluator; Iris Piñero, Enrollment Support Specialist; Sherry Prescott, Lead Front Desk Representative; Hannah Steiner, Citizenship Education Program Coordinator. **Administrative Team:** Holly McCoy, Executive Director; Chad Knezel, Director of Development & Volunteer Engagement; Tammy Knutson, Director of Finance & Operations; Dustin Slane, Director of Marketing & IT.

Volunteer Photographer

Sara Risley

Founded in 1965, Literacy Services serves adult learners with quality education programs - Adult Education (AE), General Education Development (GED) test preparation, 5.09 High School Equivalent Diploma (HSED), English Language Learning (ELL), Workforce Training and Career Pathway Bridges, and integrated and personalized Functional Literacy instruction.

Literacy Services of Wisconsin is grateful for the broad support of our community, including nearly 500 volunteers and financial support from 1000 individuals; 200 foundations, corporations and organizations; The United Way of Greater Milwaukee & Waukesha County; and Adult Education and Family Literacy Act. We are grateful for our partnerships with Equus, Maximus, and Milwaukee Public Schools.

555 N. Plankinton Avenue
Milwaukee, WI 53203
(414) 344-5878

www.literacyservices.org
info@literacyservices.org



Equity

Continued from Page 1

by involving new partners and folks who are committed to innovation within correctional settings, we can do better and create a lasting impact in Southeast Wisconsin.

On another note, hybrid learning is here to stay. LSW is currently offering 60% of programming virtually and the other 40% is spread throughout our seven locations. Programming is driven by student need. We acknowledge that no two students follow the exact same path to the

successful completion of their academic goals. We owe it to our students as individuals to actively ensure that we are operating within an aligned network of like-minded organizations to break down barriers and approach adult education in a holistic way. You will see several opportunities this summer and during National Literacy Month in September to engage with partners, learn together as practitioners of this work, and continue to build community with one another in our mission to ensure opportunities for adult students.



Addressing the Educational Needs of Justice-Involved Adults

By: Charles Bradford, Manager of Community Corrections

Literacy Services of Wisconsin has partnered with the Wisconsin Department of Corrections and WRTPIBIG STEP to implement our MC3/HSED program model at the Racine Youthful Offender Center and Racine Correctional Institute in an AEFLA grant-funded project through the Wisconsin Technical College System.

The MC3/HSED program provides a singular way of connecting with individuals in the prison systems who are in need of both a high school credential and a pathway to an apprenticeship in the construction trades. Learners utilize a curriculum designed from competencies aligned with the nationally recognized College and Career Readiness & Common Core State Standards while concurrently gaining credentials through the Multi-Craft Core Curriculum (MC3), which is also nationally recognized. These standards provide precise goals and expectations our learners need in reading, language arts, and mathematics at each grade level to better support their completion of secondary education and fulfillment of career goals. The MC3 curriculum is guided by WRTPIBIG STEP and is comprised of 120 hours of construction trades skill-building activities created by the North American Building Trades Union (NABTU). NABTU is a labor organization representing more than 3 million skilled craft professionals in the United States and Canada. Additionally, NABTU comprises fourteen national and international



Charles Bradford (left) joins volunteer tutor, John Shefchik (right), at a workstation where students meet with tutors virtually and in-person to meet their educational goals.

unions and over 330 provincial, state, and local building and construction trades councils NABTU has worked with its members in an effort to assist our students through a standardized curriculum guided for success in the construction apprenticeship of each student's choice. Classes for our MC3/HSED program run a span of 16 weeks, 4 days a week, 4 hours per day.

In order to further promote the educational aspirations of incarcerated adults, Literacy

Services of Wisconsin has also partnered with the Milwaukee County Jail to offer additional adult educational opportunities. Our program seeks to assist participants in improving their reading, language arts, and math skills, while also giving them the opportunity to obtain a GED necessary for entry or advancement in employment. Additionally, this program will assist students with gaining important skills that can lead to economic self-sufficiency in both their professional and personal goals.

continued on page 4



MCJ Student Feedback

By: David Peters, Milwaukee County Jail Program Coordinator

Students in Literacy Services' Adult Education Program at the Milwaukee County Jail (MCJ) receive one-on-one academic support and participate in career exploration and planning activities. These program support services take place virtually and in person. Below is a sampling of recent feedback from students in the program.

What do you like best about your tutor?

- The communication
- They have a lot of patience with me
- The great help that they provide and the time they are willing to give is amazing

What do you like best about your career advisor?

- They encourage me
- They give me something to look forward to; they give me hope
- They opened my eyes up to things I may not have thought of – they also have a great spirit

What value is there for you in working one on one with your career advisor?

- Finding out I'm good at things I never thought about before

What is the value of tutoring and career advising for people at MCJ?

- Better education, mental happiness, better communication skills, critical thinking, staying focused on goals, finding out what your goals are, learning to stay in good spirits

The MCJ program is working with people to address individual academic and career planning needs and, in doing so, is also working to spark each individual's interest in long-term self-investment in order to unlock their own potential. We all have a role in supporting their academic and workforce success.



LSW services provided onsite at the Milwaukee County Jail, both in-person and virtual, include: one-on-one and small group tutoring, labs, progress monitoring and support, job training resources, post-secondary education resources, and community-involved learning activities that bring different aspects of the community to our participants in the jail.

Officer Matthew Johnston (left), Program Coordinator, Milwaukee County Sheriff's Office, Milwaukee County Jail and David Peters (right) meet in the MCJ classroom.





2022 COMMUNITY AWARDS & FUNDRAISING DINNER

LSW hosted our annual fundraiser at Discovery World on May 17. It was an evening to highlight our connections within the community by celebrating innovative partnerships and programs that support our student first focus.

We were joined by several of our esteemed partners who were honored during the ceremony: Silver Spring Neighborhood Center, Milwaukee Public Schools, Milwaukee Area Technical College, and the United Way of Greater Milwaukee and Waukesha County. We also awarded two \$500 scholarships to LSW graduates who are continuing their educational journeys at MATC this fall.



LSW's comprehensive programming is designed to meet students where they are physically and academically. Adult education is at the center of all of our partnerships, bringing enhanced benefits to our students via more locations, resources, and access to post-secondary career pathways.

The live appeal was energetic and everyone in attendance was truly generous in their support. We did not have a grand total calculated that evening, but we are excited to share that we raised \$23,500 from individual donations! Overall, the event raised nearly \$90,000 to support adult literacy education in Milwaukee and Waukesha counties.

Event Committee Volunteers

Tanya Holler-Muench
- Committee Chair
Dr. Damira Grady
Jaclyn Baker
Jenny Littmann
William Severson
Karl Wolff
Marie Weiss

COMMUNITY AWARDS



COURAGEOUS THINKING AWARD

Milwaukee Area Technical College (MATC)

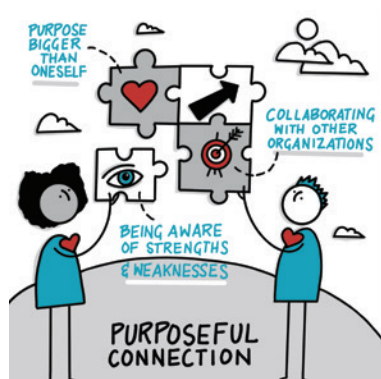
MATC has partnered with LSW for over 20 years. MATC and LSW work together to ensure that students have a clear path to reaching their post-secondary goals. MATC currently provides ten of its instructors to LSW each semester. These instructors work within various programs across several LSW locations. MATC **thinks courageously** about how to meet the needs of our community by collaborating with local organizations like LSW to create networks that support LSW's mission. MATC also partners with LSW on grant-funded activities focused on Integrated Education and Training, which connects students to career pathways by allowing concurrent enrollment in classes that dually support their individual needs and goals.



PURPOSEFUL CONNECTION AWARD

Milwaukee Public Schools (MPS)

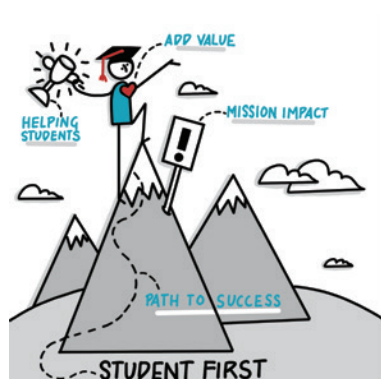
LSW has been a proud partner of Milwaukee Public Schools for nearly a decade. This relationship is all about the parents and families connected to the schools and surrounding neighborhoods. Since research directly links parent and family literacy to children's success, this is a **partnership with a clear purpose**. LSW is co-located within North and South Division High Schools. From these two sites, LSW provides instruction to parents and family members representing connections to over 80 different MPS district schools. During the pandemic, this relationship came to the fore, as LSW was able to offer additional programming aimed at supporting parents and families struggling to navigate their child's virtual learning activities.



HONOR DIVERSITY & FOSTER INCLUSION AWARD

United Way of Greater Milwaukee & Waukesha County

Lack of access to technology is often a barrier to achieving academic goals for many adults. The pandemic made such access crucial to ensuring that LSW could cultivate an inclusive virtual classroom environment where students could attend class, submit assignments, chat with peers and instructors, and do research. Inclusion is not an easy task in a virtual world. Without United Way's Techquity initiative and COVID-19 relief efforts, LSW would have struggled to meet the basic needs of our students because we simply did not have the technology resources or PPE for occasional in-person interactions. **Honoring diversity and fostering inclusion** is at the heart of United Way's Techquity initiative, and we saw student enrollment and success increase during a time when many other learning opportunities were on pause.



STUDENT FIRST AWARD

Silver Spring Neighborhood Center (SSNC)

Student success and a **student first mindset** are front and center in LSW's partnership with Silver Spring Neighborhood Center. For over a decade, LSW and SSNC have worked alongside one another to bridge gaps for adult students. Over the last three years in particular, that partnership has grown into a true collaboration that centers on the needs of students living and working on the north side of the city. In addition, it allows LSW to do what we do best for students while providing them with access to so many of the wonderful programs and services that SSNC offers. This co-location model truly demonstrates the impact nonprofits can make when they align their missions and focus on their unique strengths for the benefit of the whole community.

Meet our partners at <https://bit.ly/lswcommunityawards> or scan here to view videos:



THANK YOU FOR CHOOSING LSW!

Adventure Milwaukee, African American Chamber of Commerce of Wisconsin, Shirley Allen-Thames, Ben Anderson, Art By Anita, Kyle Ashley, Ernice Austin, Baird Foundation, Inc., Mary Jo & Ed Baisch, Bank Five Nine, Mr. Barkow, JoAnna Bautch, Beans and Barley, Joan Bedinger, Benevity, Alexis Bernard, Bittercube, Lindsay Blumer, BMO Harris Bank, Boldt Family Fund, Inc., Trisha Bournellis, Kevin Bresnahan, Carol Brill, Brookfield Badger Insurance, Dr. Valencia Brown, Burkhart Construction Corporation, Ethel Cahill, Charles & Priscilla Camilli, Vanesa Carmona-Lewis, Oscar Castaneda, Serina Chavez, Alvin & Mary Ann Cleek, Cloud Red, Colectivo Coffee Roasters, Gil R. Cubia, Sylvia Dawson, Angel Dequardo, Discovery World, Julie Divjak, Misty Donough, Ginger Duiven, Early Music Now, Jan Eder, Marcia Eliason, Rebecca Emmons, Carol Englund, Joan Fagan & David Cross, Cheryl Ferrill, Leslie Fillingham, First Stage Theater, Regina Flores, Kelly Fox, John & Jean Gabriel, Gage Lake Geneva Cruise Line, Ms. Patricia Gahl, Natalie Gamez, Kay Garcia, Jennifer Garry, Aubrey Giammarco, Xochitl Gonzalez, Dr. Damira Grady, Brittany Grayson, Great Lakes Distillery, Phillip & Rebecca Gries, Lisa Harris, Dianna Higgins, Tanya Holler Muench, Worthington Hortman, Hospitality Democracy Marketing, Devin Hudson, Craig Hulce, Colin Hutt,

Interstate Parking Company, Linda Iverson, Norine Janzen, Chris Jenkins, Jewish Museum Milwaukee, Johnson Controls, Inc., Bill & Sandy Kaminski, Sandra Keiser, Kendra Scott, Gretchen Kensler, Valerie Kensler, Mary Ann & Timothy Klabunde, Abie Klein, Susan Klein, Jeffry & Shelby Knezel, Sherrill Knezel, Owen Knezel, Spencer & Taylor Knezel, Michael Knoeller, Dr. Lia Knox, Mark Koehler, Koss Corporation, John Krystowiak, Daniel LaFrenz, Kerry & Dominic Leet, Tracy Lehrmann, Jennifer Littmann, Leslee Lloyd, Marietta Luckman, Dona Rae Lundin, Lynden Sculpture Gardens, Vickie Major, Melissa & Dylan Mann, Aaron Alan Mclean, Joyce Medford & Thomas Olig, Katie & Justin Mertz, Joan Mielke, Joyce Mielke, Milwaukee 7, Milwaukee Area Technical College, Milwaukee Art Museum, Milwaukee Blacksmith, Milwaukee County Zoo, Milwaukee Film, Milwaukee Opera Theatre, Milwaukee Pretzel Co, Milwaukee Public Museum, Milwaukee Repertory Theater, Milwaukee Symphony Orchestra, Rose Mary & Dean Muller, Karen Nelson, Kay Newell, Beth Norris, North Point Lighthouse Friends, Inc., Melissa Nowak, Lynn Olberding, Our Voice Milwaukee, Outpost Natural Foods, Jim & Claudia Paetsch, Joshua & Kim Palleon, Ethel Parnell, Amanda Passmore, Brian Petersdorf, William & Mary Piernot, Cassie

Powalisz, Karen Powell, Sherry Prescott, Joyce Radtke, Brenna Ratajczyk, Susan & Paul Reardon, Priscilla Reeves, Sharif Reno, Sergio Rincon, Sara Risley, Eli Rivera, Lisa Rulf, Mitul Rustagi, Gabriella R. Saenz, Schlitz Audubon Nature Center, Cynthia Schmeier, Kendall Schoenike, School Sisters of Notre Dame, Annemarie Scobey-Polacheck, Rozanne Screven, Melissa Shekoski, Henry & Leaella Shirley, Marsha Siatczynski, SITE Staffing, Inc., Skylight Music Theatre, Steve & Tracy Smith, Songbird Hills Golf Course, Karly Sopczic, Linda Spice, Robert Sproat, Sue Steinkraus & Kevin Brown, Alice Steuck-Konkel, Susan Stewart, Stone Creek Coffee, Jane Tanner, Angela Taylor, The Barry and Mary McNulty Family Charitable Fund, The Bartolotta Restaurants/Care-a-lotta, The Charles Allis and Villa Terrace Art Museums, The Pabst Theater Group, The Pfister Hotel, The Sisters of St. Francis of Assisi, The Wisconsin Conservatory of Music, Brooke Thomas, Beverly Thompson, Angela Thompson, Three Lions Pub, Erin Timm, Nate Tiziani, Tre Rivali, Phillip Treiber, Alison Trouy, Urban Ecology Center, Stacey Van Rens, Maclovio Vega, Margie Vehrenkamp, Teresa Velk, Samuel Warmuth, We Energies, We Energies Foundation, Bev Weeden, Ted Wegner, Wegner CPAs LLP, Marie Weiss, Mark Taylor & Sherrie Weller, Rachel Wisniewski, Jill Wisniewski, Jim Zdeb, Zilber, Ltd.

Special thanks to our event sponsors and underwriters!

Presenting Sponsor



Gold Sponsor



Silver Sponsors



Bronze Sponsor



Table Sponsors



Event Decor Underwriter



Event Program Underwriter



Thank You!

The following donors made gifts or pledged support between December 1, 2021 and May 31, 2022. Thank you for empowering adult students to read and write their way to a better future. We promise to put your gifts to good work! It is our commitment to recognize every donor based on the donor's wishes. If your name does not appear as you would expect, please contact Chad Knezel at (414) 226-5357 or via email at chad@literacyservices.org.

In-kind & Book Donations:

Elmbrook Rotary Foundation • Lori Hipp • Betsy Kerns • Brad Krause • SITE Staffing, Inc. • Rachel Van Dam • Valerie Weber • Jennifer Wright

Individuals:

Robert & Bobbi Abendroth • Shirley Allen-Thames • Mary Andruszkiewicz • Anonymous • Miles Aquino • Robert & Peggy Arfman • Jeff & Melissa Augustin • Carl & Ellen Baehr • Mary Jo & Ed Baisch • Richard Baldwin • Vince Banker • Dennis & Christine Batchelet • Chris Bauer • JoAnna Bautch • Kathleen Beaver • John & Margaret Beckwith • Suzan C Ben-Poorat & Richard Hack • David Berg • Audrie Berman & Mark Mendelsohn • Karen & Elliot Berman • Christine Bernard • Mark & Lori Boutelle • Susan & Bruce Boyd • John Brahm & Margaret MacLeod Brahm • Marge Brewer • Robin Brisco • Karen Buker • Elizabeth Burke • Sharon Busey • Marifred Bylow • Charles & Priscilla Camilli • Mary C. Cannon • Jaime Cano Lopez • Linda Carlson • Mark & Terri Chelkowski • Jan Constable • Hannah Cook • Louis Sampson Cornelius & Priscilla Ann Borniec • Marcia Crompton • Gil R. Cubia • Darren Davis • Abraham de Jesus Navarro • Patricia Delmenhorst • Dorothy A. Dieter • Bob & Carol Diggelman • Michael Dillon • Harry & Barbara Drake • Gary Drescher • Ginger Duiven • Connie Eastman • Eric Eben & Christine Fenske-Eben • Charles & Ryszarda Ehemann • Gayle Elton • Rebecca Emmons • Lynn & Peter Engel • Steven Epstein • Jean Ericson • George Fahr • Carol Fibich • Ellen & Michael Figueira • Nancy A. Filsinger • Mary Lou M. Findley • Jim & Barbara Fisher • Nancy Florsheim • Susette Ford • Heather Fortney • Randall & Carol Franke • Warner & Dorothy Frazier • Mary Ellen & Al Froehlich • Zoe Ganos • Adam & Carole Glass • Debra Goeks • Sandra Goodkind • Douglas

Gordon • Beth Gosnell • Lorna Grade • Dan & Cynthia Graham • Reed & Nancy Groethe • Lori Hanes & Todd Martens • Mr. & Mrs. Robert L. Hanley • Vita Hanson • Millicent Hawley • Leone Held • Vern & Kathryn Herman • Dianna Higgins • Mary Beth Holloway • David Holmes • John Horgan • Richard Horsfield • Barb & Mike Huber • Mary & Bob Jacobson • Marybeth Jacobson • Diane Jakubowski • Cora & Thomas Janus • Pauline & Thomas Jeffers • Sue Ann Jenrich • Alex Ng & Carol Julin • Patti Keating Kahn & Chuck Kahn • Patrick & Jane Keily • Mary Ann & Timothy Klabunde • Colleen & Frank Klein • Richard Klinkowitz • Deborah Knepeke • Tammy Knutson • Robert & Gail Korb • Paul Kosidowski & Kathy Donius • Dennis & Nancy Kostka • Wayne & Barbara Kowalski • Tom & Bezmi Kranick • Pamela A. Kroger • Richard Krueger • Charles & Holly Krull • Mary E. Lacy • Sue & Brian Lanser • Greg & Pat Latsch • Larry & Mary LeBlanc • Kerry & Dominic Leet • William & Kathleen Levy • John & Jan Liebenstein • Elliot & Eva Lipchik • Joanne Lipo Zovic & Paul Zovic • Michael Lynch • Marlena & Roscoe Mackie • Jamy & Michael Malatesta • Ann Margolis • Philip Marks • John Matthias • Mary & Scott McFadden • Kathleen McKeown • Binnie Mendoza • Marie Mikolainis • Jennifer Mikulay • Eileen Miller • Doug & Ginny Mills • Kevin & Jennifer Mleziva • Amy & Robert Monahan • Patricia Monroe • Patricia Murphy • Howard & Elaine Myers • Larry Nelson & Dawn Borowski • Taylor Duncan & Lisa Nevins • Ken & Lisa Nowakowski • Toner O'Connor • Brien O'Hara • Robert Opel • Margaret F. Oteman • Jim & Claudia Paetsch • Joshua & Kim Palleon • Amy & Jason Parry • John Peters • Mark & Juliet Peterson • Randy & Janet Peterson • James & Sharon Petrie • Allen & Beverly Pfaff • Diane Piedt • Beth Polisky Reisig • David Pritchard & Janet Meissner • Pritchard • Mary & Arthur Pulizos • Carol & Dave Raasch • Mary Raebel • Gordon Ralph • Phil & Ellen Recht • Charlotte Reed • Corliss Rice & James Gingery • Jeanne Rivers • Isaac Robinson • John Rodee • Paul Rodriguez • Judy Rogers • Deborah Roszak • Alan & Lisa Ruesch • Andrea Wagoner & Roger Ruggeri • Kayla Russick • Bill & Ann Scallon • Kenneth Schellin • Daniel Schnarsky • Jeanine Schoen • Kelly Schuett • Barbara Schuettpelez • John Shefchik • Henry & Leaella Shirley • Mark Short • Mary Skladanek • Robert T. Smith, III • Linda Spice • William Spohn Jr. • Dan & Valerie Stefanich • Thad Steffen • Sue Steinkraus & Kevin Brown • Mary Stephan • Marcia A. Stern • Louis & Barbara Stippich • Robert & Lynelle Sukulich • Jane Tanner • Joey Tayler • Richard & Anna Teerlink • Maria Totoraitis • Corinthia Van Orsdol • Charlotte Voigt • George Volkaitis • Michael Vruno • Matt Waltz • Janice

Watson & Alfred Lustig • Robert Wawrzyn • JoAnn Weinkauff • Marie Weiss • Alan Westrom • John Wierschem • Elaine F. Wilhelm • Carol & Lee Wolcott • Nancy Zabriskie • Jim Zdeb • Dale L. Zimmerman

Organizations:

Abigail & David Nash Donor Advised Fund of the Jewish Community Foundation • Advocate Aurora • Albert J. and Flora H. Ellinger Foundation, Inc. • Amazon Smile • Benevity • Bill & Idy Goodman Family Donor Advised Fund of the Jewish Community Foundation • Boswell Books • Burnette Butler Literacy Fund • Century Fence Company • Charities Aid Foundation of America • Charles D. Ortgiesen Foundation • Clare M. Peters Charitable Trust • Devine Family Foundation • Eileen & Howard Dubner Donor Advised Fund of the Jewish Community Foundation • Elm Grove Women's Club • Evan and Marion Helfaer Foundation • Facebook Payments, Inc. • Forest County Potawatomi Community Foundation • Frontstream • GE Foundation • Gene & Ruth Posner Foundation, Inc. • Half Price Books • Hepburn Bootstrap Foundation • Herbert Kohl Philanthropies • Howard Frankenthal Family Foundation, Ltd. • Immanuel Presbyterian Church • Jan Serr & John Shannon Foundation • Johnson Controls Foundation • JPMorgan Chase Foundation • Kolaga Family Charitable Trust • Krause Family Foundation, Inc. • Kurtz/Larne Family Fund • Moeser Family Charitable Fund at Schwab Charitable Fund • Nesheim Family Foundation, Inc. • Nora Roberts Foundation • North Shore Congregational Church • Otto Bremer Trust • Paula Phillips & Daniel Riemer Donor Advised Fund of the Jewish Community Foundation • Phyllis and Walter Malzahn Charitable Trust • Pilot Club of Milwaukee • Principal Financial Corp • Richard Kahn Donor Advised Fund of the Jewish Community Foundation • Rita Stevens Charitable Trust • Service Club of Milwaukee • Shorewest Realtors • St. Luke's Lutheran Church • The Streich Family Foundation • U.S. Charitable Gift Trust • Unitarian Universalist Church West • United Methodist Women - Community United Methodist Church • United Way of Greater Milwaukee & Waukesha County • Waukesha County Community Foundation • Waukesha Rotary Club Charitable Fund • Wauwatosa Presbyterian Church • We Energies Foundation • YourCause • Zilber Family Foundation

United Way Pledges:

Anonymous • Michael & Jackie Herd Barber • Barbara Fuldner • Harley-Davidson Motor Company • Dr. Leander Jennings • Ted & Mary Kellner • William & Christie Krugler • Mary Ann & Charles Labahn • David & Madeleine Lubar

Elizabeth Meyer • Richard & Suzanne Pieper • Barbara A. Stein • Carolyn Ziebert • Zilber, Ltd.

In honor of:

Jackie Avial, on her birthday - Stefanie Jochman • **Jaclyn Baker** - Betsy Head • **Agnes Barbee** - Barbara L Felix & James Vyvyan • **Anne Marie Bensfield** - David & Mary Ann Lillich • **Robin Brisco** - Jim & Nancy Schacht, and Mary Stearns • **Frank Clines** - Rick Horowitz • **Barb Delaney & Bob Jacobson** - Jim Jacobson • **Ginger Duiven** - Gregory Duiven, and Michaela, Lewellyn Humpal & Nathan Humpal • **Gary Edwardson** - Barbara Edwardson • **Sharon Ellestad** - We Energies • **Dr. Damira Grady** - Esmeralda Delgado • **Mel Henke & his mother, Louisa** - Charles Jorgensen • **LSW Staff & Volunteers** - Henry & Leaella Shirley • **LSW students** - John & Mary Splude • **Vera Le Fort** - Ann Wegner LeFort • **Bill Millington** - Pamela Millington • **Damira & Jeremy Mitchell** - Clara Dwyer • **Jim Paetsch** - Pat & Grace O'Brien • **Ted Schulte** - Beth Nacker • **Megan Stefanich** - Dan & Valerie Stefanich • **Valerie Stefanich** - Andrew Stefanich • **Jin Sun** - Melissa DeBot • **The Tarnutzer Family and Jim & Berdine Mumper** - Karen Schoenike • **Teachers** - Barbara J. Olson

In memory of:

Mary Aufderheide - Anne Aufderheide • **David J. Baldwin** - Shauna Baldwin • **Mary L. Barrett** - Marvin & Dianna Bednar, George Bichanich, Christine Buch, Peg & Mike Harloff, Janis Marshall, Joan Maurer, Diane Meredith, Susan Wichman, Gayle Wilson • **Mary Casey Brennan** - Brian & Nola Brennan • **Marianne Blunk** - Donna & Robert Lucht • **Judy Burns** - Judith Sieltmann • **Cheryl Butterfield** - Cheryl Butterfield estate • **Y. Chung** - Jeewon Schally • **Sister Vonnie De Cleene** - Joyce

De Cleene • Mary Lou Del Balso - Vickie Major, Kate O'Neil • **Jerry Groth** - Robert & Theresa Muselman • **Sara Hansen** - Joan & Jeff Hansen • **Mary Branton Jones** - Andrew Jones, Taylor Glinski, Judith & Norman Lasca, Aglaia O'Quinn, Gari Stein • **Dorothea Jorgensen** - Charles Jorgensen • **Marilyn Killian** - Paul & Diane Schmidt • **Dr. Frank Laubach** - Gordon Ralph • **Karen Leonard** - Jay & Bridget Christiansen, Christopher & Lesley Hill, Donald & Pamela Hotz, Robert & Christine Klussendorf, Jon Leonard, Jason Levin, Debra Running, Dorothy Sandberg, Holly Wray • **Blake McDuffie** - L.A. Armour & K.E. Armour-Hoke, Fran Borkowski, Dale & Joann Corsten, Daniel & Christine Drewry, Robert & Donna Froehlich, Randy Tews & Lorilyn Jacobsen-Tews, Russell & Marian John, Jean Kowalski, Carole McDuffie, Dale & Donna Paquette, Mavis & Gerald Roesch, Schneider Tire Outlet • **Susan Robertson** - John Machulak • **Marianne Rudebusch** - Conor Williams • **Janice Marie Sullivan** - Robert & Janice Sullivan • **Debra Velleman** - Kelly Schuett • **Irene Washington** - Curtis Washington • **Gary Weida** - Trish Adey, Kathleen Ames Shackleton, Mary Barry, Ellen Boettcher, Michelle Bowker, Kelly Fox, Stephen Gianoli, Kevin & Melissa Grabowski, Heidi Hagemeyer, Natalie Hahlen, Mary Ellen Keller, Mary Kregel, Pam Kriger, Kathy Lance, Mary & Scott McFadden, Richard & Mary Meyers, Michael Miller, Carol Pawlak, Kevin & Karin Peterson, Kathryn Power-O'Brien, Alice Rodrian, Dr. & Mrs. James Roelke, Vicki Rossi, Melanie Schultz Peggy Serrano, Sue Smith, Kelly Sparks, Mary Stearns, Tom & Pat Towers, Carole Walthers, Bev Weeden, Joan Weida, Faye Weida, Charlotte Wendorff, Rick & Pat Zimbric • **Elmer & Louise Witt** - Julie Disseler • **Henry J. Wright** - Judith & James Callan

“The instructors know that we’re not the traditional students. We are all adults, and life got in the way, and we’re just trying to get back to where we left off. Now that I’m doing it, I realize that I am unstoppable if I put my mind and my effort into everything that I want to do. I’m so thankful for these programs because they honestly are changing people’s lives, just like mine.”

- Marisela



2022 HSED Graduate & MATC Scholarship Awardee

When you are ready to give:

There are many ways to support our students' hard work!

Gifts of cash • One-time or recurring online gifts •

In-kind gifts such as furniture, books, or office supplies (check out the wish list on our website for current needs)

• Deferred income gifts, including charitable gift annuities and charitable remainder trusts • Bequests to Literacy Services as part of a will and last testament •

Gifts of stock, mutual funds, and other securities (may be additional benefits for supporters over 70 ½ years old)



\$5/month • Provides GED practice test vouchers for 15 students.



\$20/month • Provides two tablets for supporting our English Language Learning digital literacy curriculum.



\$40/month • Supports a student through an entire 16-week high school certification course.

Questions about giving? Call Chad Knezel at (414) 226-5357



Lifelong Learning

Continued from **Page 1**

Silvia describes her experiences in pursuing a master's degree while juggling the demands of life as difficult, though rewarding. She decided to seek this particular degree for several reasons.

"I am motivated because I was interested in continuing my studies, but when I learned that this program was online, bilingual, and the same field as my career, I applied right away. I have heard about other programs like this, but they are all in English," said Silvia.

Although she is fluent in English, Silvia is more confident using Spanish, which is common for most adult second language learners. A surprising challenge presented itself when Silvia applied for a scholarship, the Archbishop's Scholars Fund provided by the Archdiocese of Milwaukee, for her master's program. She was invited to interview by the scholarship committee and accepted, assuming the interview would be conducted in Spanish. When she logged on to the Zoom meeting, though, she saw a panel of people she had never met before... and none of them spoke Spanish.

"I was a little nervous. They were all looking at me, and I didn't know anybody there! But they were friendly. They asked me simple questions about myself, about my family, and about my aspirations. I think now, this experience reinforced my confidence. Now, nothing is too difficult for me. If I can win this scholarship and convince them that I deserve the scholarship in English, it means I am strong and that I can do it!" Silvia recounted.

Silvia was selected to receive the scholarship, which has immensely helped with the stress of this big undertaking.



"It is a blessing," Silvia said. ***"Without the scholarship, it would not have been possible to achieve this goal. Or maybe, it would have been more difficult, because I would be investing more time and effort in work. If I didn't get the scholarship, I would not have turned down the opportunity. I would have figured out a way to achieve my goal, and I would never refuse the opportunity."***

Having a support system in place helps a lot when it comes to balancing a busy schedule.

"Thankfully, my children support me. They help me when I have questions. Most of them are in school, and they guide me when I have concerns, and

they are my inspiration," said Silvia. ***"It's not easy, but my whole family supports me. My husband cooks dinner. When I sit at my desk, nobody bothers me!"***

Three of Silvia's children are currently in post-secondary education, and two of them are also pursuing master's degrees. This is a family with a passion for learning.

When asked why she thinks it's important to be a lifelong learner, Silvia had a clear message: ***"Education changes your life. It is important to keep your mind busy, and developing your mind, and at the same time, developing your spirit. You can reach yourself and those around you."***

2022-23 Event Calendar

2022

July 4	Independence Day - All sites closed
July 28 -29	Staff Retreat - All sites closed
Aug 29-Sept 2	Staff Planning Week - LSW closed to students/tutors
Sept 5	Labor Day - All sites closed
Sept 6	Fall semester begins
Sept 8	Light the Hoan for Literacy
Nov 23-25	Fall Break - All sites closed
Dec 22-Jan 1	Winter Break -All sites closed

2023

Jan 2-6	Staff Planning Week - LSW closed to students/tutors
Jan 9	Spring semester begins
Jan 16	MLK Jr. Day - All sites closed



● - Closed ○ - No Classes ● - Special Event ● - Semester Begins

July 2022

S	M	T	W	Th	F	S
					1	2
3	4	5	6	7	8	9
10	11	12	13	14	15	16
17	18	19	20	21	22	23
24/31	25	26	27	28	29	30

August 2022

S	M	T	W	Th	F	S
	1	2	3	4	5	6
7	8	9	10	11	12	13
14	15	16	17	18	19	20
21	22	23	24	25	26	27
28	29	30	31			

September 2022

S	M	T	W	Th	F	S
				1	2	3
4	5	6	7	8	9	10
11	12	13	14	15	16	17
18	19	20	21	22	23	24
25	26	27	28	29	30	

October 2022

S	M	T	W	Th	F	S
						1
2	3	4	5	6	7	8
9	10	11	12	13	14	15
16	17	18	19	20	21	22
23/30	24/31	25	26	27	28	29

November 2022

S	M	T	W	Th	F	S
		1	2	3	4	5
6	7	8	9	10	11	12
13	14	15	16	17	18	19
20	21	22	23	24	25	26
27	28	29	30			

December 2022

S	M	T	W	Th	F	S
				1	2	3
4	5	6	7	8	9	10
11	12	13	14	15	16	17
18	19	20	21	22	23	24
25	26	27	28	29	30	31

January 2023

S	M	T	W	Th	F	S
1	2	3	4	5	6	7
8	9	10	11	12	13	14
15	16	17	18	19	20	21
22	23	24	25	26	27	28
29	30	31				



More information at literacyservices.org

555 N. Plankinton Avenue
Milwaukee, WI 53203-2901
(414) 344-5878

www.literacyservices.org
info@literacyservices.org

Student Enrollment

Accepting new students! Sign up for our Initial Assessment Sessions. Call **414-344-5878** for available dates and times.



The Syl·la·bus

Summer 2022

Literacy Services of Wisconsin Newsletter

In this issue:

- Services for Justice-Involved
- Community Awards Recap
- The Faith of a Lifelong Learner
- And more!



Follow us on
twitter

twitter.com/LiteracyWI



Find us on
Facebook

facebook.com/literacyservices

Unsubscribe

We hope you enjoy reading about our mission, but we understand if you would prefer not to receive our mailing. To be removed from our mailing list, simply send a message to chad@literacyservices.org or call us at **414-344-5878**.



Photos by Tasha Perez

Congrats, Grads!

